

EETI WinCE Touch Driver Installation Guide

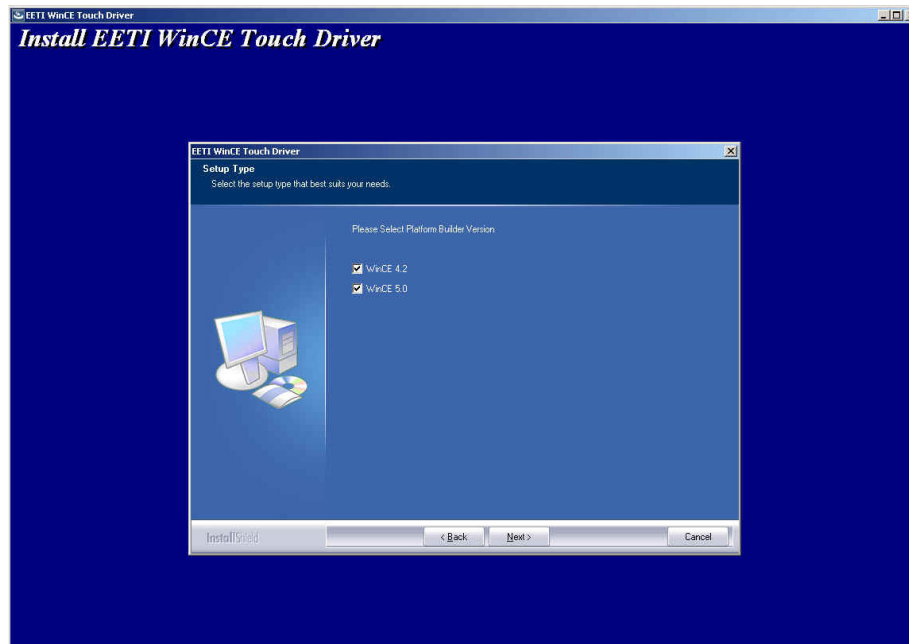
Version: 2.1.1.3715

Operation System: Windows CE .NET (CEPB 4.0/4.1/4.2) 5.0

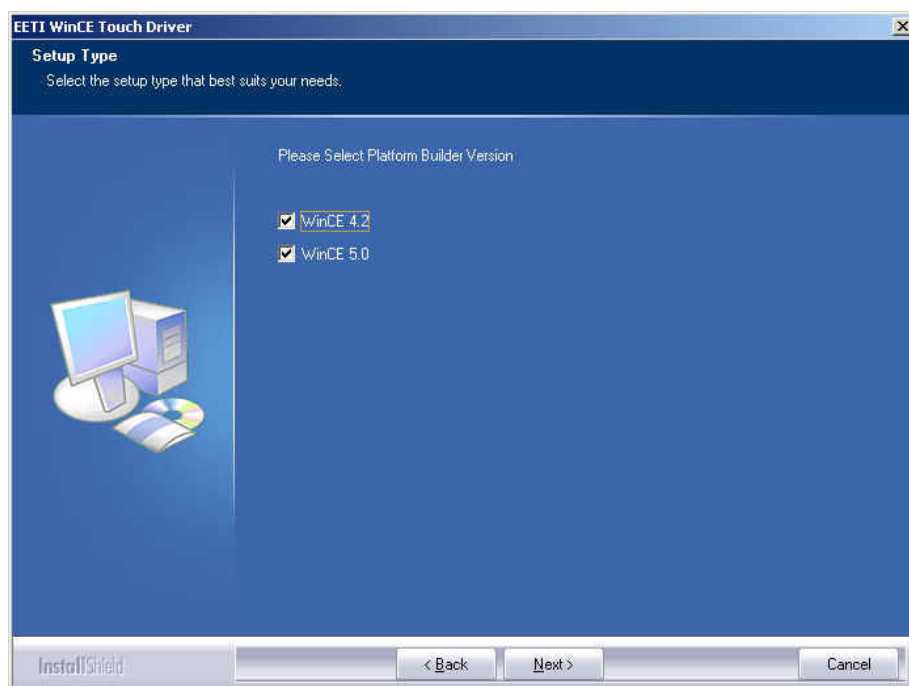
Release Date: 09-20-2011

Before you execute setup.exe, please make sure your platform builder is not launched.

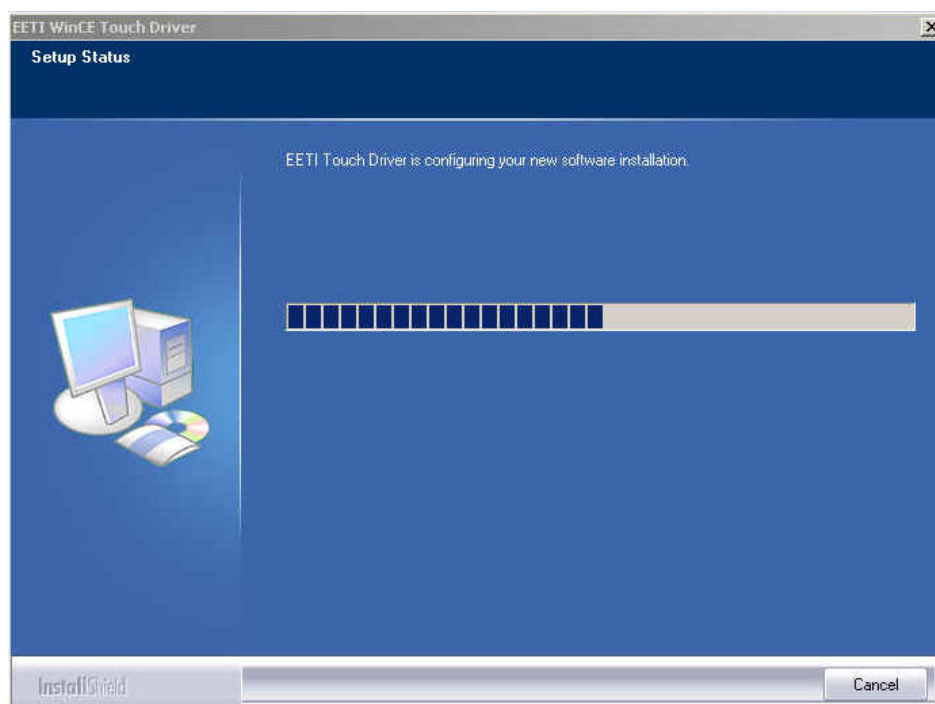
1. Execute setup.exe, you will see the installation window.



2. Select the platform builder version(s) you want to install.



3. Press Next and you will see the process

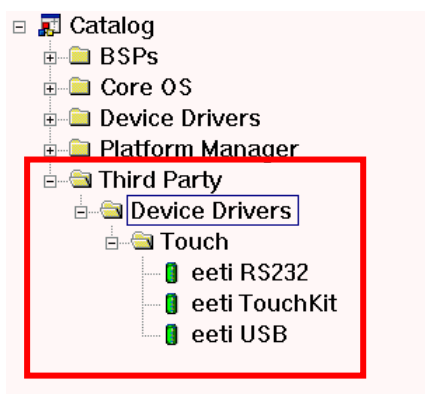


4. If this message occurs, please check whether you have installed platform builder in your operating system.



5. Launch platform builder Windows CE4.2/5.0, check whether there will be three new catalog items under Third Party → Device Drivers → Touch.

Note: If you can not see the newly added catalogs, try to press mouse right button and select Refresh Catalog



6. Open your workspace. Add catalog items into your OSDesign.

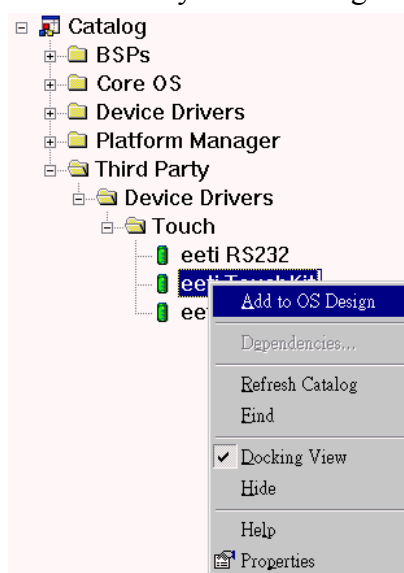
To add catalog into your OSDesign, simply press right button and select Add to OSDesign

[For USB Controller]

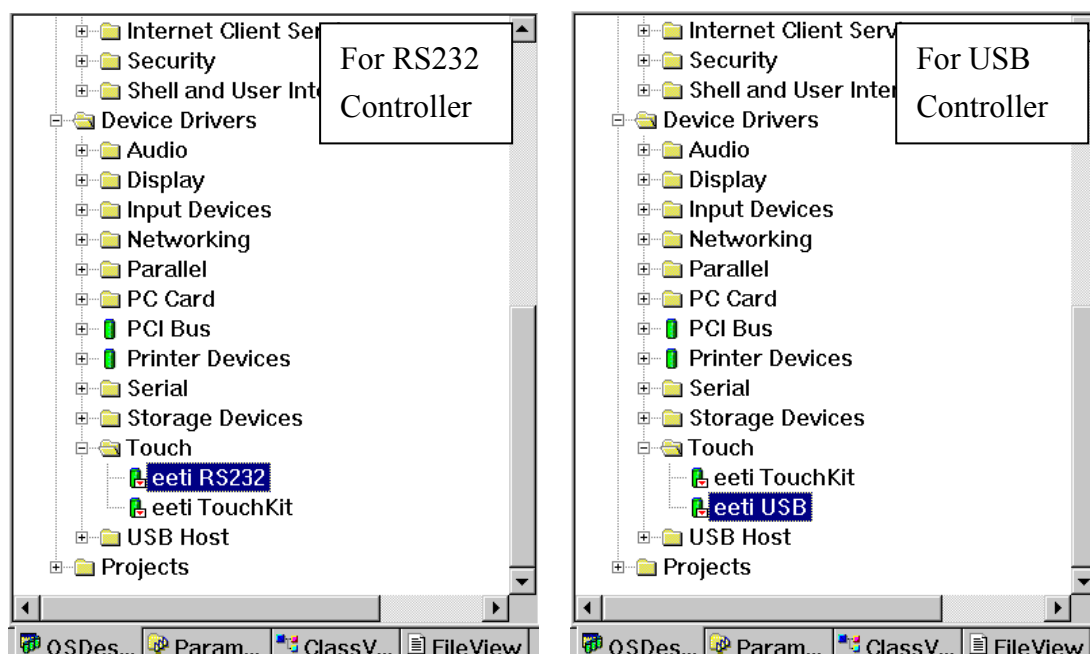
Add **eeti TouchKit** and **eeti USB** into your OS Design

[For RS232 Controller]

Add **eeti TouchKit** and **eeti RS232** into your OS Design



7. After you add catalog items, you will find the items inside your workspace.



8. Select Build OS → Make Run-Time Image (Build → Make Image for CE4.2) to build the image.

Notes:

1. [For USB Controller] Select the UHCI or OHCI USB Host Controller driver into your platform which supported by the target device. Check the USB mouse can go well at the same port. Select the "Mouse" into your platform. This can be found in:Catalog Item Window, add "Core OS -> Windows CE devices -> Shell and User Interface -> User Interface -> Mouse"
2. [For RS232 Controller] Select the COM port which touch device is using, please modify eeti232.reg
 [HKEY_LOCAL_MACHINE\Drivers\BuiltIn\TouchKit1]
 "Dll"="TouchKit.dll"
 "Order"=dword:FF
 "Prefix"="TKT"
 "Index"=dword:00000001
 "Context"=dword:1; → This is the COM Port setting.
3. If you wish to uninstall the driver, please remove the component in your OS Design and execute setup.exe again.

Driver Registry Settings:

Settings for eetiTool.reg:

[HKEY_LOCAL_MACHINE\Drivers\TouchKit]

Registry Key	Type	Description
RBSIZE	dword	set scale that will be treated as the same point, $x\text{-coordinate regin(pixel)} = (RBSize / 65535) * x\text{-coordinate resolution}$ set RBSize = 0 can disable right button
RBTIME	dword	set how long the same point pressed will treated as right button. The unit is 10^{-7} second.
FLAGS	dword	set 0x1 software filter enable set 0x3000 update EEPROM function enable set 0x100 to enable the check rotation function
SoundType	dword	SoundType = 0 is no sound SoundType = 1 is Beep in touch down. SoundType = 2 is Beep in lift off.
EdgeCompEn	dword	Edge compensation enable
EdgeCompUp	dword	Edge compensation upper bound parameter
EdgeCompDown	dword	Edge compensation lower bound parameter

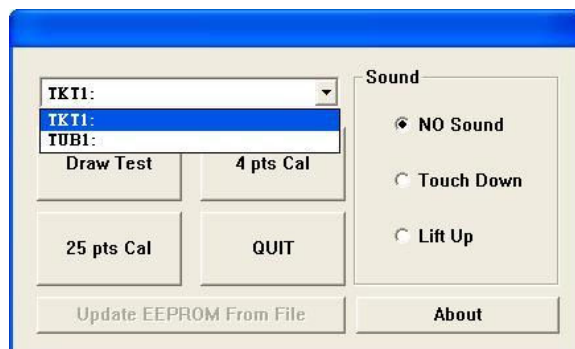
EdgeCompLeft	dword	Edge compensation left bound parameter
EdgeCompRight	dword	Edge compensation right bound parameter
HalfVGA	dword	Touch mapping to screen parameter: HalfVGA=1: touch only on upper half of screen HalfVGA=2: touch only on lower half of screen HalfVGA=3: touch only on right half of screen HalfVGA=4: touch only on left half of screen

EETI Touch Utility User Manual

The main utility of EETI touch driver is called eGalaxTouch.exe.

Users can launch the utility by following step:

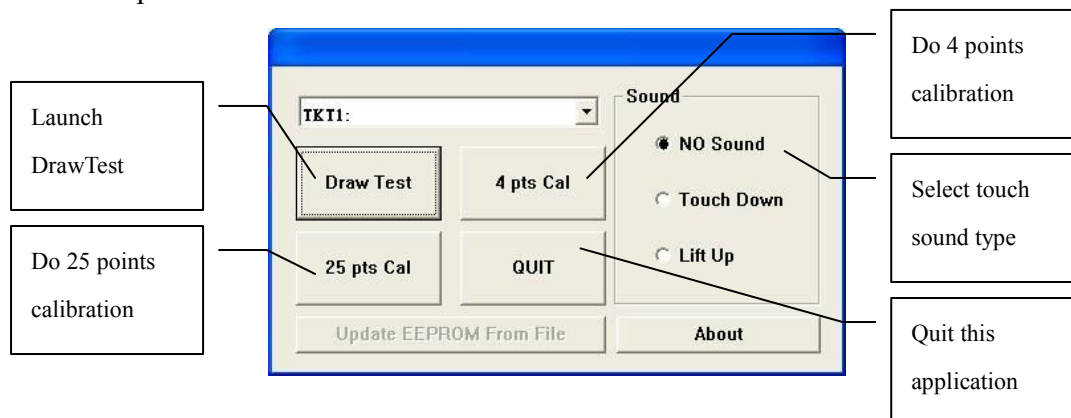
1. Start Menu → Run
2. Type eGalaxTouch and select OK
3. The eGalaxTouch utility is showed as belows



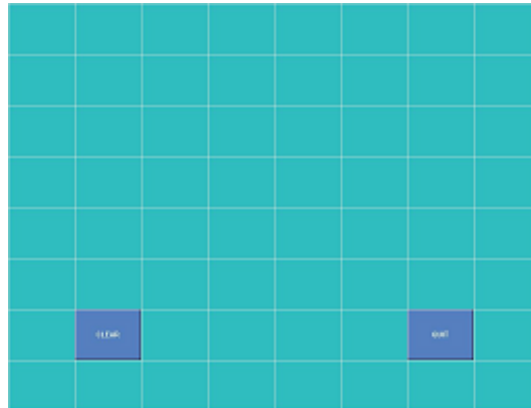
If you are using RS232 interface touch controller, please select TKT1:

If you are using USB interface touch controller, please select TUB1:

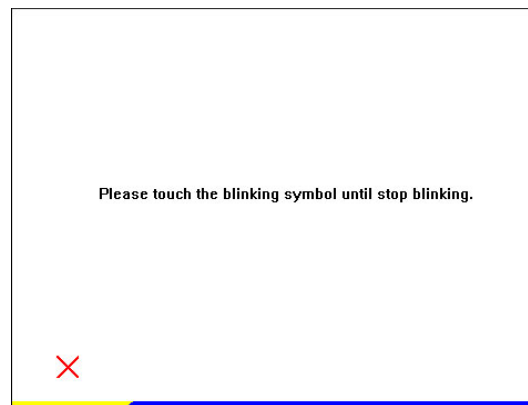
The description of eGalaxTouch buttons:



The DrawTest application is an application to let user to do drawing test.



The 4 / 25 points calibration utility is used to do calibration, users needs to touch the cross points continuously until the cross stop blinking.



If developers need to launch drawtest or calibration utility without eGalaxTouch utility, please passing the parameters according to following information:

Note that the application Calbration.exe without "i".

For RS232 interface:

Drawtest.exe "TKT1:"

Calbration.exe "TKT1: P4"

Calbration.exe "TKT1: P9"

Calbration.exe "TKT1: P25"

For USB interface:

Drawtest.exe "TUB1:"

Calbration.exe "TUB1: P4"

Calbration.exe "TUB1: P9"

Calbration.exe "TUB1: P25"

Developers can use ShellExecuteEx API and passing corresponding parameter to achieve the feature.